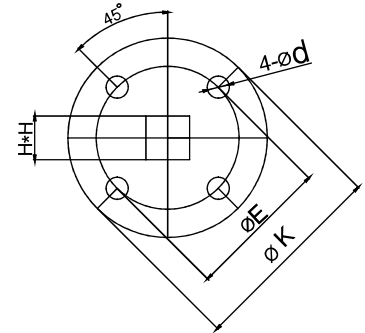
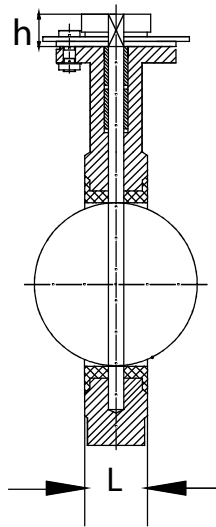
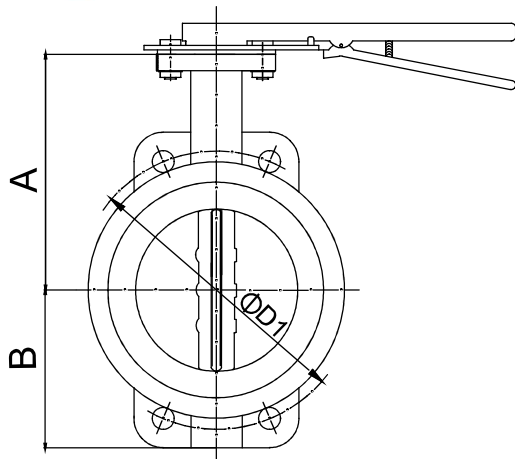


UNI-FLO WAFER BUTTERFLY VALVES, PN16



DESCRIPTION

Uni-Flo cartridge design keeps the elastomer from shifting during installation, lowers seating and unseating torques, reduces seal fatigue, and minimises seat swell. The lug design is suitable for BS4504 T10/T16 and BS10 TD up to DN450. Contact Sanspar for BS10 TD application for DN500 to DN700.

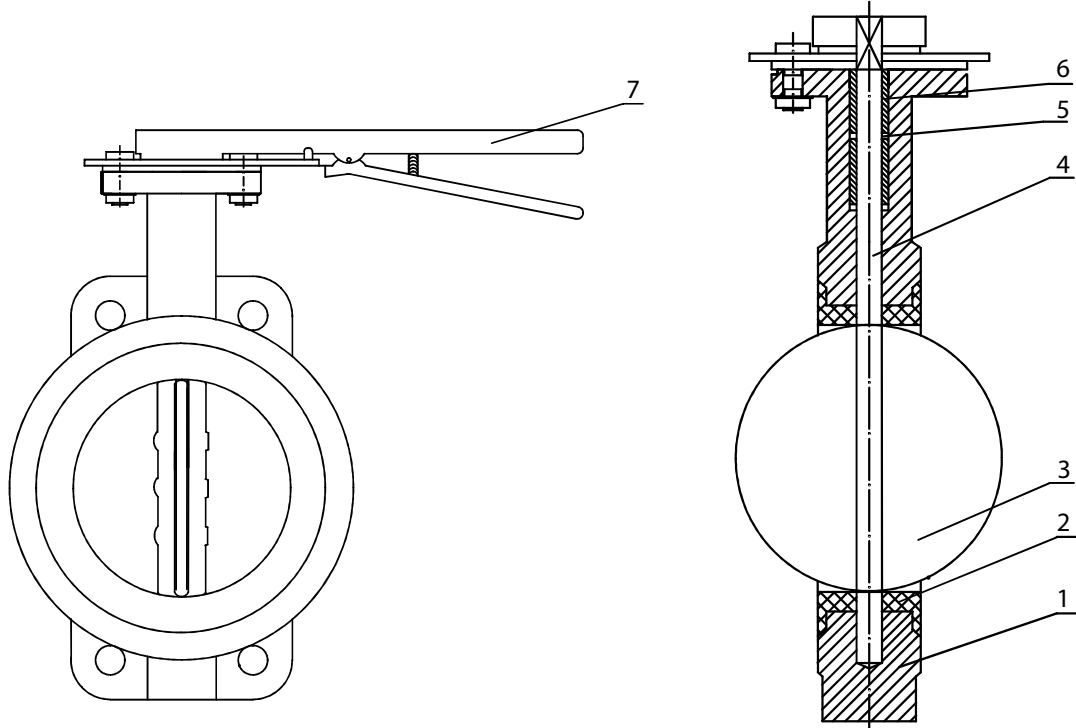


DIMENSIONS

	A	B	L	ØD1	ISO5211	h	HXH	ØE	ØK	4-Ød
DN50	135	70	43	120	F05	30	9*9	50	77	4-Ø8
DN65	141	78	46	136	F05	30	9*9	50	77	4-Ø8
DN80	149	90	46	154	F05	30	9*9	50	77	4-Ø8
DN100	164	102	52	179	F07	30	11*11	70	92	4-Ø10
DN125	182	120	54	210	F07	30	14*14	70	92	4-Ø10
DN150	197	135	56	239	F07	30	14*14	70	92	4-Ø10
DN200	222	165	60	294	F10	40	17*17	102	125	4-Ø12
DN250	271	196	68	354	F10	40	22*22	102	125	4-Ø12
DN300	297	228	77	408	F10	40	22*22	102	140	4-Ø12
DN350	368	267	77	461	F10	40	22*22	102	140	4-Ø12
DN400	400	325	87	521	F14	40	27*27	140	197	4-Ø18
DN450	422	345	106	573	F14	40	27*27	140	197	4-Ø18
DN500	480	378	132	632	F14	40	27*27	140	197	4-Ø18
DN600	562	475	154	755	F16	40	36*36	165	276	4-Ø22

UNI-FLO WAFER BUTTERFLY VALVES, PN16

MATERIALS AND TORQUE FIGURES



MATERIALS LIST

NO.	PART	MATERIAL
1	Body	SG Iron 420/12
2	Seat	EPDM
3	Disc	304SS or Chrome Steel
4	Spindle	Stainless Steel (416SS)
5	O - Ring	NBR
6	Bushing	PTFE
7	Handle or Gearbox	Steel

TORQUE FIGURES

SEATING & UNSEATING TORQUES (Nm)			
3 bar	6 bar	10 bar	16 bar
4.9	6.9	14.7	22.5
14.7	15.7	19.6	28.4
17.6	20.6	29.4	38.2
20.6	27.4	49	57.8
32.3	45.1	87.2	93.1
47	83.3	112.7	129.4
77.4	137.2	176.4	215.6
123.5	205.8	264.6	343
157.8	264.6	382.2	548.8
294	607.6	823.2	931
578.2	1097.6	1421	1911
421.4	872.2	1156.4	1372
823.2	1362.2	1764	2450
980	2156	3381	3724